

REPLAT OF TRACT "C" OF PALM BEACH POLO EQUESTRIAN CLUB PLAT NO. 3 OF WELLINGTON COUNTRYPLACE, P.U.D.

BEING A REPLAT OF ALL OF TRACT "C" OF PALM BEACH POLO EQUESTRIAN CLUB PLAT NO. 3 OF WELLINGTON COUNTRYPLACE, P.U.D., AS RECORDED IN PLAT BOOK 61, PAGES 114-115 OF THE PUBLIC RECORDS OF PALM BEACH COUNTY, FLORIDA IN PART OF SECTION 20, TOWNSHIP 44 SOUTH, RANGE 41 EAST, PALM BEACH COUNTY, FLORIDA SHEET NO. 2 OF 2 SHEETS OCTOBER 1991

ABBREVIATIONS

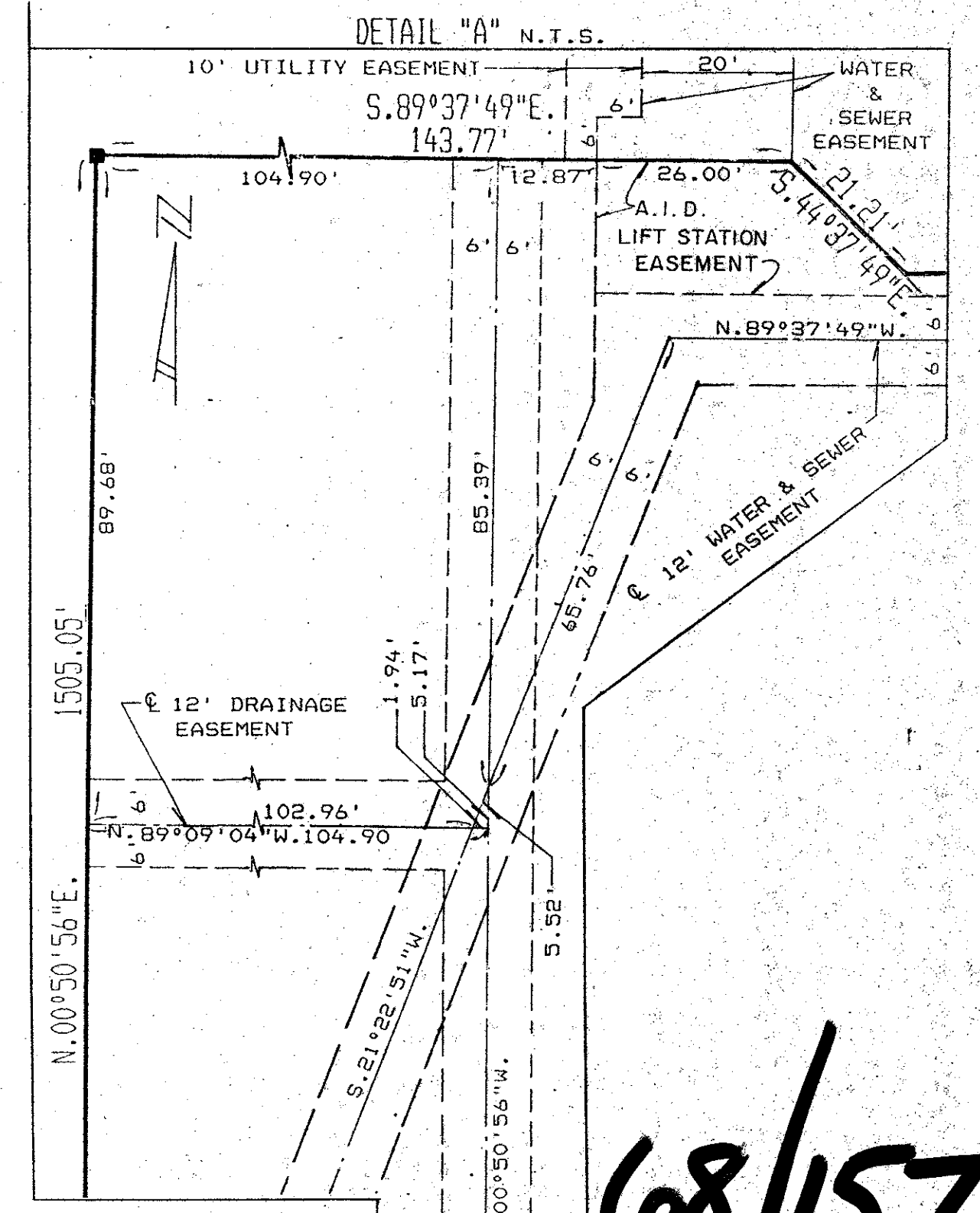
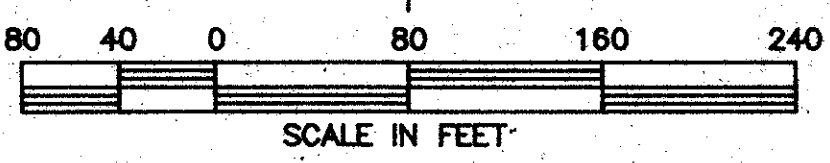
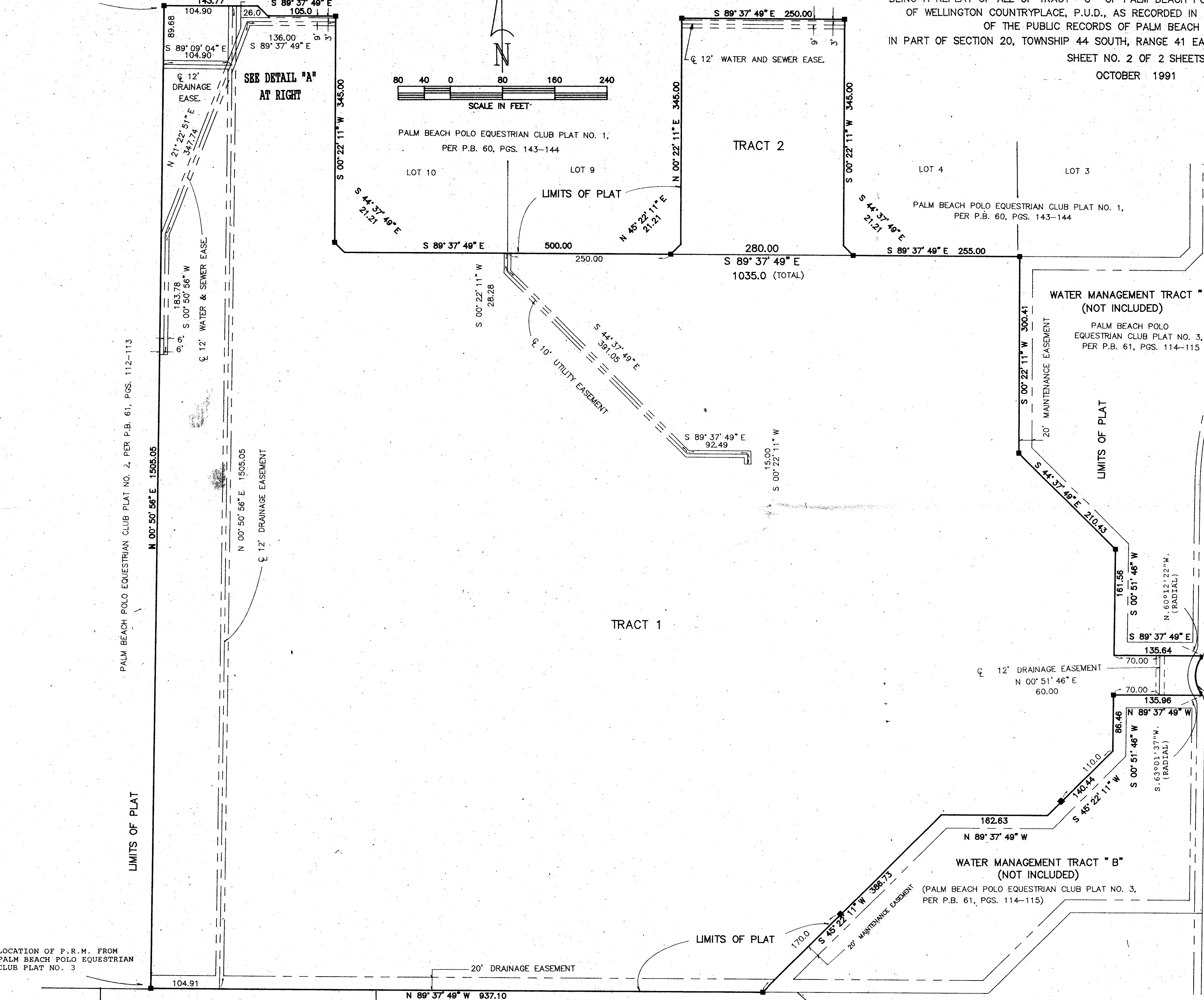
- C = CENTERLINE
EASE. = EASEMENT
P.B. = PLAT BOOK
P.U.D. = PLANNED UNIT DEVELOPMENT
R.L.S. = REGISTERED LAND SURVEYOR
PGS. = PAGES
SURVEYOR'S NOTES

ALL BEARINGS SHOWN HEREON ARE RELATIVE TO AN ASSUMED MERIDIAN USED THROUGHOUT WELLINGTON COUNTRYPLACE - P.U.D. THE WEST LINE OF THE REPLAT OF TRACT "C" IS ASSUMED TO BEAR NORTH 00°50'56" EAST.
BUILDING SETBACK LINES SHALL BE AS REQUIRED BY PALM BEACH COUNTY ZONING REGULATIONS.
NO BUILDINGS, NOR ANY KIND OF CONSTRUCTION, SHALL BE PLACED ON WATER OR SEWER EASEMENTS.
THERE SHALL BE NO BUILDINGS OR ANY KIND OF CONSTRUCTION PLACED ON UTILITY OR DRAINAGE EASEMENTS. CONSTRUCTION OR LANDSCAPING UPON MAINTENANCE OR MAINTENANCE ACCESS EASEMENTS MUST BE IN CONFORMANCE WITH ORDINANCE 86-21 AND ALL OTHER BUILDING AND ZONING CODES AND/OR ORDINANCES OF PALM BEACH COUNTY.
THERE SHALL BE NO TREES OR SHRUBS PLACED ON UTILITY EASEMENTS WHICH ARE PROVIDED FOR WATER AND SEWER USE OR UPON DRAINAGE EASEMENTS. LANDSCAPING ON OTHER UTILITY EASEMENTS SHALL BE ALLOWED ONLY AFTER CONSENT OF ALL UTILITY COMPANIES OCCUPYING SAME.
WHERE DRAINAGE, UTILITY, WATER, OR SEWER EASEMENTS CROSS, DRAINAGE EASEMENTS SHALL TAKE PRECEDENCE.
ACME IMPROVEMENT DISTRICT SHALL HAVE THE RIGHT TO CONSTRUCT AND MAINTAIN WATER AND SEWER FACILITIES WITHIN UTILITY EASEMENTS AND ROAD TRACTS, AS SHOWN HEREON.
THERE MAY BE ADDITIONAL RESTRICTIONS THAT ARE NOT RECORDED ON THIS PLAT THAT MAY BE FOUND IN THE PUBLIC RECORDS OF PALM BEACH COUNTY, FLORIDA.
ALL EASEMENTS SHOWN HEREON ARE AS SHOWN ON PALM BEACH POLO EQUESTRIAN CLUB PLAT NO. 3, WELLINGTON COUNTRYPLACE - P.U.D.

PALM BEACH POLO EQUESTRIAN CLUB PLAT NO. 2 PER P.B. 61, PGS. 112-113

PALM BEACH POLO EQUESTRIAN CLUB PLAT NO. 1 PER P.B. 60, PGS. 143-144

LOCATION OF P.R.M. FROM PALM BEACH POLO EQUESTRIAN CLUB PLAT NO. 3



BOOK 68 PAGE 157 FLOOD ZONE AO-1 ZONING RE ZIP CODE 33414 P.U.D. NAME Wellington Countryplace, FLORIDA

TAZ # 708

PET. 76-60 COLLECT 0333-012

68/157

LOCATION OF P.R.M. FROM PALM BEACH POLO EQUESTRIAN CLUB PLAT NO. 3

EQUESTRIAN CLUB ESTATES - PLAT NO. 2 OF PALM BEACH POLO AND COUNTRY CLUB WELLINGTON COUNTRYPLACE - P.U.D. P.B. 64, PGS. 190-192

EQUESTRIAN CLUB ESTATES - PLAT NO. 3 OF PALM BEACH POLO AND COUNTRY CLUB WELLINGTON COUNTRYPLACE - P.U.D. P.B. 64, PGS. 193-195

EQUESTRIAN CLUB ESTATES - PLAT NO. 4 OF PALM BEACH POLO AND COUNTRY CLUB WELLINGTON COUNTRYPLACE - P.U.D. P.B. 66, PGS. 98-99

SCALE: 1" = 80' DATE: OCT. 1991 NICK MILLER, INC. Land Surveying Planning & Development Consultants DRAWN BY: CMK REPLAT OF TRACT "C" OF PALM BEACH POLO EQUESTRIAN CLUB PLAT NO. 3 DRAWING NUMBER: 88003P